

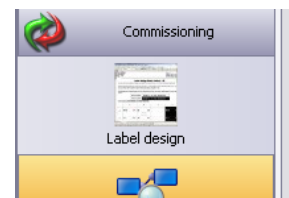
## When I press the label design button in Neets Configurations utility I get garbage in Word

Regarding products:

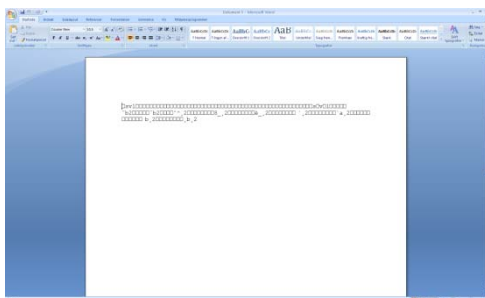


307-0001, 307-0002, 310-0001 and 310-0002: Control systems

When you press the “Label design” button in the Neets Configurations Utility you may encounter that a corrupt document are shown instead of the right label document.



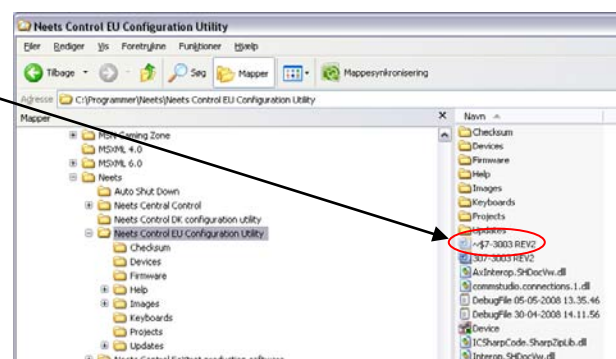
When Word opens a template it creates a temp file in the same catalogue. In some cases Word do not delete this temp file and this course the Neets Configurations Utility to open this temp file instead next time.



To get Neets Configurations Utility to open the right template again you simply delete the temp file that Word has created.

The temp file are found in the program folder where you install the program (default: C:\program files\Neets\Neets Control EU Configurations Utility)

Look for a file that is called: ~\$7-3003 REV2.dot. This file are a hidden file, to show hidden files click on “Functions\Folder properties” select “Show” and select “Show hidden files and folder”



Best Regards

Neets