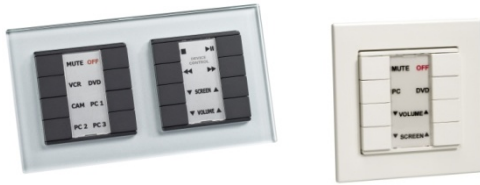


Problems with learning IR on Neets Control – EU using a laptop

Regarding products:



307-0001, 307-0002: Neets Control – EU standard and professional

When using a computer that has a built-in IrDA unit to make IR devices in the Neets Control configurations utility, you may experience that the IR codes are not learned correct or no codes are learned at all.

This problem is most likely the result of the IrDA port interference with the IR learning. To overcome this problem we have described how to disable the IrDA port on a typical Windows XP machine.

Click Start -> Control panel.

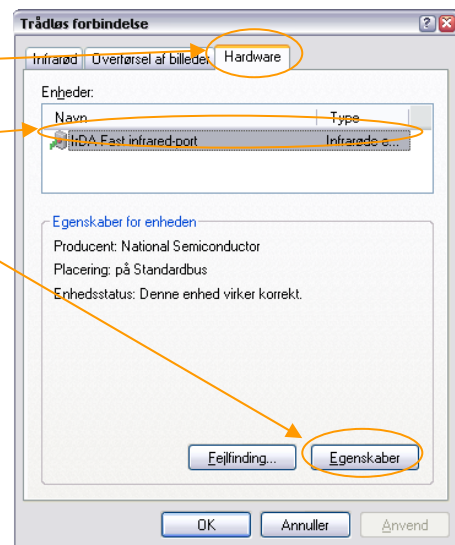
Now find the Wireless connection icon and



double click on it.

The wireless connection screen should now appear.

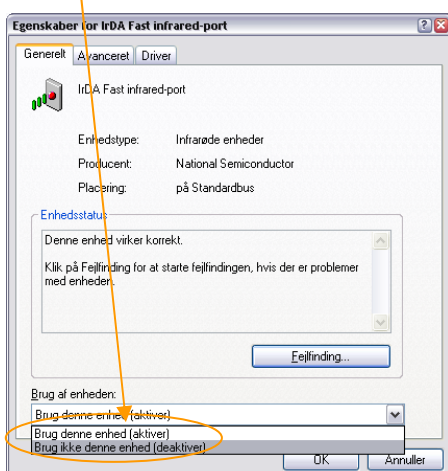
Select the Hardware tab.



Now select the IrDA unit and click on the property button.

The property screen for the selected IrDA unit will now appear.

Deactivate the IrDA unit by selecting the “deactivate” line in the box.



You have now deactivated the IrDA unit. Now try to start the IR learning process in the Neets Configurations Utility again and see if the codes are it learned correct.