



**Neets Audio Amplifier, version 2 has been nominated for an InAVate Award in the category Residential Audio (Non loudspeaker).**

With the Neets Audio Amplifier you get a 2x25 Watt amplifier in 8 Ohm. The amplifier is secured with a short circuit speaker output.

Furthermore you get 4 unbalanced Line inputs and 2 x RS-232 inputs with a RS-232 loop through.

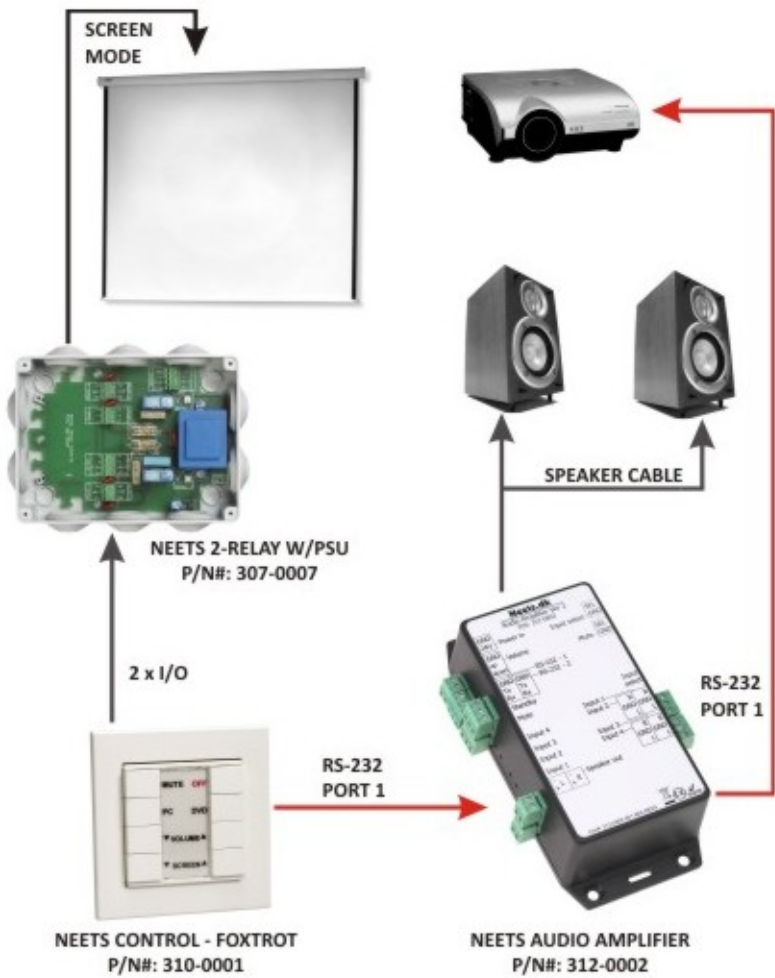
The amplifier can be control via a Neets Control system. Connecting your Neets control system to the Audio Amplifier via the RS-232 port gives you the possibility to control channel, gain, volume, bass, treb, balance, mute and on/off.

The amplifier has a Wake On Signal function, which means that the amplifier will turn on when receiving an audio signal on one of the inputs.



One of the huge benefits with the Audio Amplifier is that when controlling the Audio Amplifier via a Neets Control system, for instance the Neets Control – FoXtrot, the RS-232 loop through function will give you the possibility to control both the amplifier and a projector.

This means that you can control two devices via RS-232 from a control system with only one RS-232 comport. The control system, connected to the Audio amplifier, sends a RS-232 signal to the amplifier. The



amplifier loops the signal through to the projector.

**VOTE FOR NEETS AUDIO AMPLIFIER VERSION 2 - USE THE LINK BELOW**

In order to win the award we need your help. Use this link for the [Technology InAVation Awards 2010 Voting Page](#)

Vote for Neets Audio Amplifier in the second category:  
**2. Residential Audio (Non Loudspeaker)**

